



Collegepond

YOUR FUTURE, OUR PRIORITY



TEST PREP BROCHURE

www.collegepond.com

OVERVIEW OF THE GRE

The GRE General Test is a computer-delivered test that features question types that closely reflect the kind of thinking you'll do and the skills you need to succeed in today's demanding graduate school programs, including business and law. The test-taker-friendly design lets you skip questions within a section, revisit and rework your answers (mark and review feature), and have the flexibility to choose which questions within a section you want to answer first. Get a look at the structure of the GRE General Test.

The GRE General Test measures your verbal reasoning, quantitative reasoning, critical thinking, and analytical writing skills, skills that have been developed over a long period of time and are not related to a specific field of study but are important for all. Here's a look at the content covered in the three test sections: Analytical Writing, Verbal Reasoning, and Quantitative Reasoning.

TEST STRUCTURE

The overall testing time for the GRE General test is changed from 3 hours and 45 minutes to 1 hour and 58 minutes. The 10-minute scheduled breaks are no longer available for GRE test takers unless they are requested and have been approved for test accommodations.

Measure	Number of Questions	Allotted Time
Analytical Writing (One section)	'Analyze an Issue' Task	30 minutes
Verbal Reasoning (Two sections)	27 questions	Total 41 minutes
Quantitative Reasoning (Two sections)	27 questions	Total 47 minutes
-	-	Total Exam Duration = 1 hour and 58 minutes

SCORING PATTERN

The Analytical Writing section is scored on a scale of 0 – 6 in half-point increment.

The Verbal Reasoning section is scored on a scale of 130 - 170 in 1-point increment.

The Quantitative Reasoning section is scored on a scale of 130 -170 in 1-point increment.

The Verbal Reasoning and Quantitative Reasoning sections are section-level adaptive. The first operational section of each measure (i.e., Verbal and Quantitative) is of average difficulty. The difficulty level of the second section of each of the measures depends on your overall performance on the first section of that measure. For example, if for the Quantitative Reasoning measure, you do very well in the first section, the second section of the Quantitative Reasoning measure will be at a higher level of difficulty. The scoring for the Verbal Reasoning and Quantitative Reasoning measures takes into consideration the total number of questions answered correctly across the two sections, as well as the difficulty level of the sections.

SPECIFIC FEATURES OF THE TEST

The advanced adaptive design of the GRE General Test allows you to move forward and backwards throughout an entire section freely. Specific features include:

- You can preview and review capabilities within a section.
- The test has 'Mark' and 'Review' features to tag questions, so you can skip them and return later if you have time remaining in the section.
- You are allowed to change/edit answers within a section.
- An on-screen calculator for the Quantitative Reasoning section is available.

IMPORTANT INFORMATION ON REGISTRATION, PAYMENTS, & VALIDITY

Official Website - <https://www.ets.org/gre.html>

Registration Mode - Online (via students ETS account)

Test Fee - ₹22,550 (approx. \$273.39)

Mode of payment - Credit/Debit card, PayPal, Authorization voucher

Score Validity - 5 years from the test date

Approximate Score Reporting time - 10-15 working days

Extra Score Reporting - ₹2,900 (approx. \$30)

Rescheduling Fee - ₹5,000 (approx. \$60.75)

Nature of Test - Computer-Delivered Test

Test Administration Frequency - Daily

Test Repetition policy - Once every 21 days, up to 5 times within 365 days

OVERVIEW OF THE TOEFL

The TOEFL iBT test helps you stand out confidently in English, and it comes with an advantage where universities know you are ready to succeed. That's why TOEFL is accepted by more than 11,500 universities and other institutions in over 160 countries, including Australia, Canada, New Zealand, the United States, the UK, and across Europe and Asia.

THE TRADITIONAL TOEFL IBT TEST AT A TEST CENTRE

TEST STRUCTURE

Section	No. of Questions	Average Timing
Reading	20 questions	35 minutes
Listening	28 questions	36 minutes
Speaking	4 tasks	16 minutes
Writing	2 tasks	29 minutes
Total Time		1 hour 56 minutes

SCORING PATTERN

Each section of TOEFL is graded on a scale of 0-30 in 1 point increment. The composite score is the addition of all the scores. TOEFL is scored out of 120. 100+ is considered to be a good score on 120.

IMPORTANT INFORMATION ON REGISTRATION, PAYMENTS, & VALIDITY

Official Website - www.toefl.org

Nature of test - Internet-Based Test

Registration Mode - Online

Registration for TOEFL iBT - ₹16,900 (Approx. \$205)

Mode of Payment - Credit card/Debit Card/Pay Pal

Score validity - 2 Years

Score Reporting Time - Approx. 10 Calendar days

Test Rescheduling - ₹5,900 (Approx. \$72)

Additional Score Reports - ₹1,950 (Approx. \$20)

Late fee - ₹3290 (Approx. \$40)

Test Administration Frequency - 3 to 4 times a month

Test Repetition policy - Next available date



OVERVIEW OF THE IELTS

IELTS, the International English Language Testing System, is the world's most popular high stakes English language test. It is designed to assess the language ability of people who need to study or work where English is the language of communication.

The Academic IELTS test is accepted by over 10,000 organizations in 140 countries and is recognized by universities and employers in many countries including Australia, Canada, New Zealand, the UK, and the US

TEST STRUCTURE

The total test time is 2 hours 40 minutes.

IELTS Listening test (30 minutes)	You will have to listen to four recordings and then answer the questions asked. The recordings are of native English speakers and the duration of the test is 30 minutes.
IELTS Reading test (60 minutes)	The IELTS Reading test requires you to answer 40 questions and is designed to test you on an array of reading skills. You would have to read for gist, main ideas, details, logical arguments, skimming, and figuring out the writers' attitudes, opinions and intentions.
IELTS Writing test (60 minutes)	The IELTS Writing test requires you to complete two tasks and covers topics of general interest based on the module you are taking.
IELTS Speaking Test (11-14 minutes)	The IELTS Speaking test assesses your spoken English skills. The test is recorded and conducted in three parts.

SCORING PATTERN

Test takers receive a score for each test component – Listening, Reading, Writing and Speaking. The individual scores are then averaged and rounded to produce an overall Band Score.

In IELTS, scores are graded on the 9-band system. Each educational university or school sets its own minimum IELTS scores to meet its individual requirements. Mostly, an average of 6.5, with a band score above or equal to 6 in each of the 4 sections, is welcomed in most universities and schools.

IMPORTANT INFORMATION ON REGISTRATION, PAYMENTS, & VALIDITY

Official Website - www.ieltsidpindia.com

Nature of test - Computer Based Test/Paper-based test

Registration Mode - Online

Test Fee - ₹15,500 (Approx.)

Mode of Payment - Credit card/Debit Card/ICICI Challan

Score Reporting Time - Approx. 13 Calendar days (Paper-based)/ 3-5 days (Computer Based)

Score validity - 2 Years

Rescheduling Fee - ₹3875 (Approx.)

Extra Score Reporting Fee - ₹1500 for the courier, ₹400 for the registered post

Test Administration Frequency - 3 to 4 times a month

Test Repetition policy - Next available date

OVERVIEW OF THE PTE

The Pearson Language Test (PTE) - Academic. Description: The test assesses a candidate's English skills under four sections - Reading, Writing, Speaking and Listening. Suitable for: Students seeking admission in graduate programs in countries where English is the first language.

TEST STRUCTURE

Category	Number of Questions	Time Allotted
Introduction	—	Untimed
Speaking & Writing	29 to 31 Questions	54 to 67 minutes
Reading	15 to 20 Questions	29-30 minutes
Listening	17 to 25 questions	30-43 minutes

The timings shown are variable. The test will last 2 hours in total.

SCORING PATTERN

The overall score is marked out of 90. A score of 65 is a good indication of your English language ability in real-life academic situations.



IMPORTANT INFORMATION ON REGISTRATION, PAYMENTS, & VALIDITY

Official Website - www.pearsonpte.com

Nature of test - Computer-based test

Registration Mode - Online

Test Fee - ₹15900 (Approx. \$194)

Late Fee - ₹16595 (Approx. \$200)

Mode of payment - PTE Voucher (cash/Credit card/Debit card)

Score Validity - 2 years

Score Reporting time - Up to 5 working days

Rescheduling Fee - 14 days or more before test date – No additional cost
8-13 days before your test date – 50% of the test fee
7 days or fewer before test date – Full test fee

Test Administration Frequency - On fixed date

Test Repetition policy - Next available date

Extra Score Reporting Fee - No fee

OVERVIEW OF THE DUOLINGO ENGLISH TEST

The Duolingo English Test is a modern language proficiency tool designed for today's international students and institutions. It offers an English proficiency score, video interview, and a writing sample in an accessible, efficient, and secure testing experience.

TEST STRUCTURE

Unlike other English Proficiency Tests, a Duolingo English Test is conducted in one go. **The 60 minutes test is broadly divided into two sections, namely Adaptive Test and Video Interview.** The first part lasts for 45 minutes and the second part for another 10 minutes.

SCORING PATTERN

- Scores are reported on a scale from 10 - 160
- Overall scores include a general description of what you can do
- Subscores measure your proficiency in specific areas
- Each certificate has a unique, secure link

IMPORTANT INFORMATION ON REGISTRATION, PAYMENTS, & VALIDITY

Official Website - www.englishtest.duolingo.com

Nature of test - Computer-based test

Registration - Online

Test fee - \$49

Mode of payment - Debit card/Credit card

Score Validity - 2 Years

Score Reporting - Unlimited free reporting

Extra Score Reporting Fee - No fee

Test Administration Frequency - Anytime

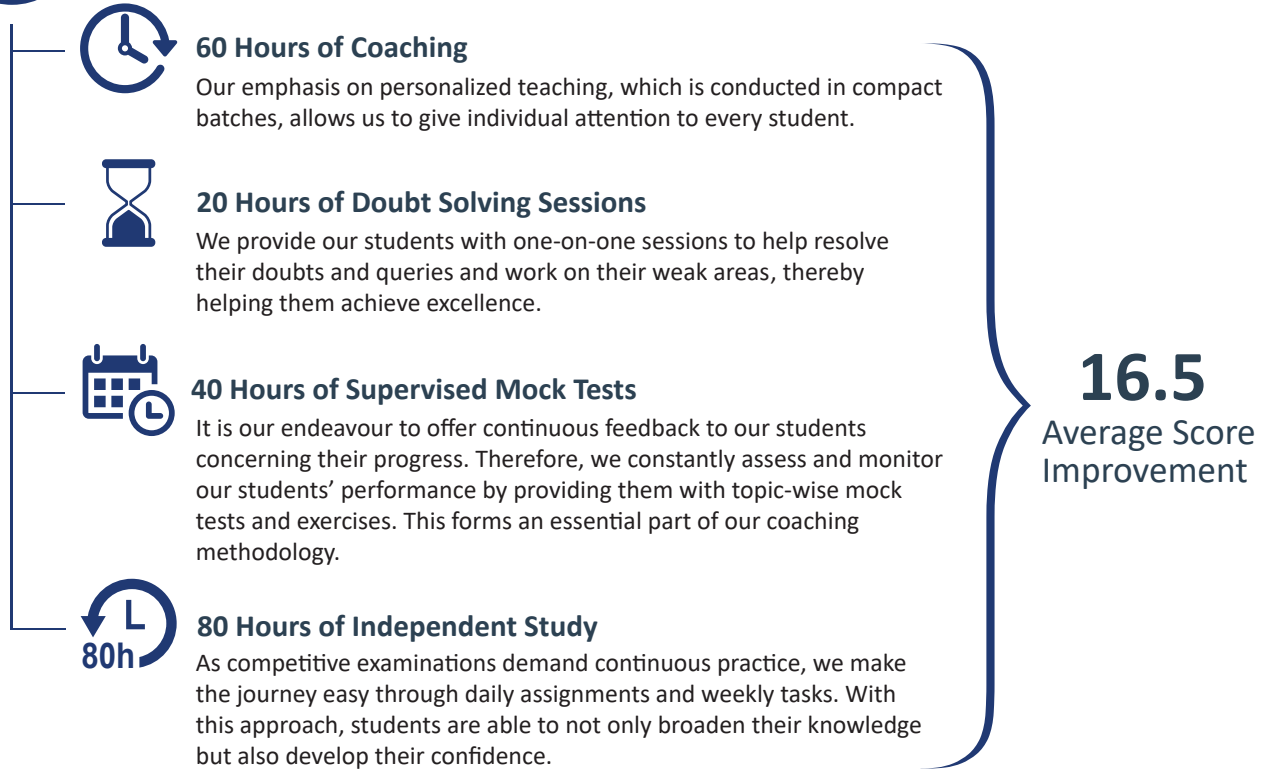
Test Repetition Policy - Anytime

THE COLLEGEPOND GRE APPROACH



200 HOURS STUDY PLAN

At Collegepond, we have a 200-hours study plan to help students sharpen their concepts. Following is the breakdown of how the plan is structured:



TOPIC WISE LECTURES

QUANTS	VERBAL
Number Properties	Etymology and Vocabulary
Percentage, Profit & Loss & SI CI	Text Completion
Average, Ratios & Mixtures	Sentence Equivalence
TSD & Work Problems	Text Completion + Sentence Equivalence - Practice Session
Venn Diagram, Equations & Inequalities	Reading Comprehension 1
Geometry	Reading Comprehension 2
Coordinate Geometry	Critical Reasoning 1
Permutation & Combination	Critical Reasoning 2
Probability	AWA - Issue
Statistics	-
Data Interpretation	-
GRE Under 60 Seconds Workshop	
Strategy Workshops (Quant & Verbal)	
Live Paper Solving Workshop	

TEST PREP SERVICES

Standardized tests are the only quantitative indicator to measure a candidate's aptitude and knowledge across the applicant pool. Therefore, to perform exceedingly well, the preparation should be taken seriously. To help students achieve outstanding scores, Collegepond has formulated a novel curriculum the sole objective of which is to help students excel in examinations like GRE, GMAT, SAT, TOEFL and IELTS. Offering an individualistic focus, the coursework has been designed to assist students "zero in" on key areas, making the time spent for preparation effective. Students can avail classes throughout the year.



AWA SECTION

Focusing on AWA coaching and 2 sets of essay reviews, our AWA test prep services have been designed to help students improve their AWA scores, thereby enhancing their eligibility for securing admission in top-ranked universities.



DOUBT SOLVING & MENTORING SESSIONS

One-on-one sessions with the professors for doubt solving till your GRE exam date.



MODULAR APPROACH

We employ a modular approach which allows you the flexibility of picking up topics and joining our batches at your own convenience. You can also expedite your course or delay it as per your requirement.



SMALL BATCHES

Our professors know that doubts can be efficiently solved in small sized batches ONLY. Hence, our batches accommodate max. 20 students for individual attention.



INTERACTIVE LECTURES

Interactive lectures are classes in which the instructor breaks the lecture at least once per class to have students participate in an activity that lets them work directly with the material.



TOPIC WISE PRACTICE QUESTIONS

All resources will be provided by us including practice material and mock papers. Mock papers are an integral part of your preparation.



GRE PORTAL

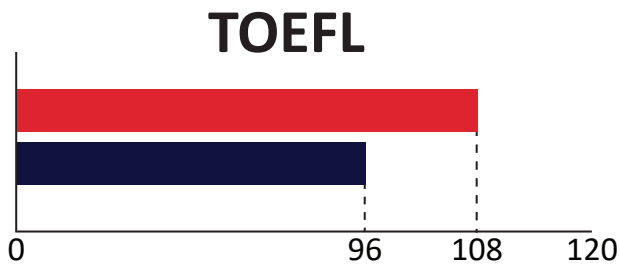
The GRE Online Portal is a comprehensive platform for students preparing for the GRE. Hosting innumerable features like the GRE Diagnostic Test, customized study plan for 30, 60, and 90 days, pre-recorded GRE lectures, performance tracker, GRE resources, etc. the portal is a one-stop solution to help you be GRE-Ready and ensure stellar scores in the final GRE!



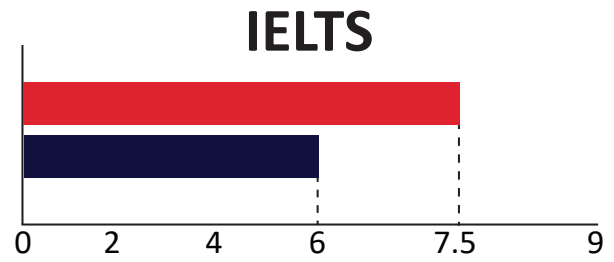
FULL LENGTH SUPERVISED TESTS

To achieve the purpose of understanding the progress of students and provide them the necessary coaching at required intervals.

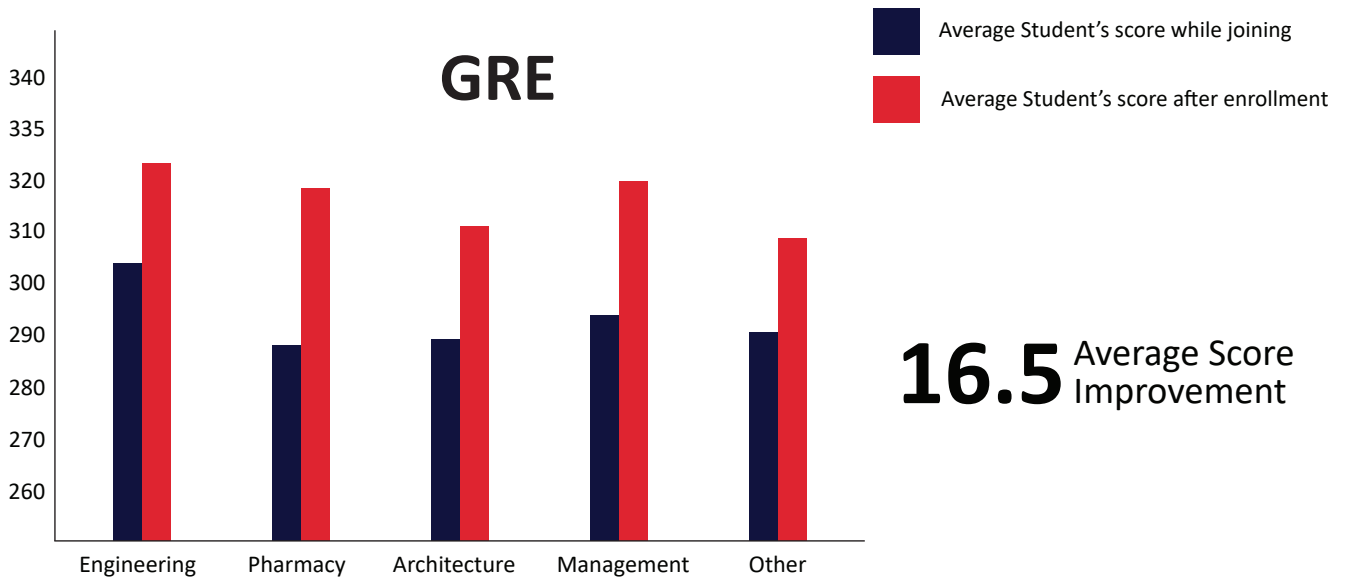
THE COLLEGEPOND **ED**VANTAGE



12 Average Score Improvement



1.5 Average Score Improvement



16.5 Average Score Improvement

HIGHEST SCORE 340/340	NUMBER OF STUDENTS WITH 320+ 42%	AVERAGE AWA SCORE 4.0
STUDENT SATISFACTION INDEX 91%	FACULTY RATING - QUANTS 4.7/5	FACULTY RATING - VERBAL 4.6/5

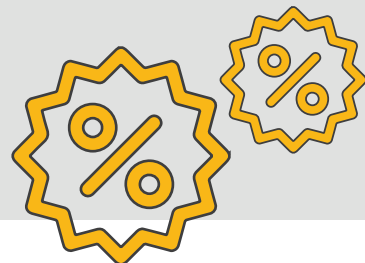
COLLEGEPOND HALL OF FAME

NAME	DIAGNOSTIC SCORE	FINAL GRE SCORE
Mihir Joshi	312	340/340
Bhavya Shahi	314	339/340
Rishi Mody	316	336/340
Anuj Dharap	314	336/340
Abhishek Divekar	310	336/340
Siddhant Gupte	311	335/340
Parth Sanghavi	316	334/340
Utsav Jamusaria	310	333/340
Ahan Kak	312	331/340
Romil Shah	309	331/340
Harshal Lehari	310	331/340
Kush Goliya	314	330/340
Amrita Date	304	330/340
Rahul Shastri	310	330/340
Advait Burde	315	328/340
Abhishek Karnal	307	328/340
Aditya Patil	308	327/340
Rajan Tidke	314	327/340

NAME	TOEFL SCORE
Shirish Dhar	120/120
Yazad Bilimoria	119/120
Jamshed Shapoorjee	118/120
Aarushi Shah	118/120
Soumili Sen	117/120

NAME	IELTS SCORE
Rahul Shah	8.5/9
Monil Jain	8.5/9
Nikita Sharma	8.5/9
Vijay Kumar	8/9

DISCOUNT ON TOEFL & GRE



At Collegepond we are engaged in constant efforts to help our students get their moneys worth with cost effective solutions and discounts wherever possible. As an Authorised Consultant for TOEFL and GRE in India by ETS, Collegepond offers discounts for students who wish to register for the exams. You simply have to enter the Collegepond promo code while paying the exam fee to avail the discount.



SCAN THIS QR CODE TO AVAIL NOW

FLAT \$30 OFF
ON TOEFL FEES!



SCAN THIS QR CODE TO AVAIL NOW



GET INR 4777 OFF
ON GRE FEES!



Note: You can attempt applying the same code up to 3 times in case of payment failure issues.

OUR PACKAGES



<p>FULL OFFLINE GRE PACKAGE</p>	<p>₹ 24000 + 18% GST</p>	<ul style="list-style-type: none"> • Interactive lectures • Workshops (Verbal & Quant) • GRE strategy lecture • Collegepond books copy • Reference material (Library & Drive Material) • Topic wise test • Full length mock test • Pre recorded videos (online package) • Modular approach (No batch system - online package) • Small Batch Size (Not more than 20 Students - Offline Package) • AWA reviews • Mentoring sessions • Offline/ Online one on one doubt solving • Customised study plan (30-60-90 days) • 4 university names • Validity offline 6 months • Validity online 1 year
<p>FULL ONLINE GRE PACKAGE</p>	<p>₹ 16000 + 18% GST</p>	
<p>VERBAL ONLINE GRE PACKAGE</p>	<p>₹ 9000 + 18% GST</p>	<ul style="list-style-type: none"> • Verbal Interactive lectures • Workshops (Verbal) • GRE Strategy Lecture • CP Verbal Books Soft Copy • Reference material (Library & Drive Material) • Verbal Topic Wise Test • Full Length Mock Test • AWA Reviews • Verbal Pre Recorded Videos • Modular Approach (No Batch System) • Mentoring Sessions • Online One on one doubt solving • Verbal Customised Study Plan (30-60-90 days) • Validity 3 months
<p>QUANT ONLINE GRE PACKAGE</p>	<p>₹ 9000 + 18% GST</p>	<ul style="list-style-type: none"> • Quant Interactive lectures • Workshops (Quant) • GRE Strategy Lecture • CP Quant Books Soft copy • Reference material (Library & Drive Material) • Quant Topic Wise Test • Full Length Mock Test • Quant Pre Recorded Videos • Modular Approach (No Batch System) • Mentoring Sessions • Online One on one doubt solving • Quant Customised Study Plan (30-60-90 days) • Validity 3 months
<p>INDIVIDUAL LECTURES</p>	<p>₹ 1500 + 18% GST</p>	<ul style="list-style-type: none"> • Topic Wise Lecture • No. of Lecture: 1 • No. of Hours: 3

“ OUR TOP ACHIEVERS ”



Mihir Joshi

GRE: 340/340

"Mr. Jimeet Sanghavi and the entire Collegepond team has played a vital role in my success to achieve a 340/340 in the GRE. I was impressed by their vast experience and immense enthusiasm throughout my preparation."



Bhavya Shahi

GRE: 339/340

"I had a great experience with Collegepond. The classes were really helpful. Jimeet sir his team cleared my doubts very quickly & were always available. The class timings were flexible & the essay evaluations helped me a lot with my AWA. The material provided was very helpful in my revisions. Thanks Collegepond."



Aditya Patil

GRE: 337/340

"The aspect that I believe was most crucial for me was the availability of both, the teachers and the management. They were quite friendly and approachable both during class and when away from class through mail or phone. Apart from this the prep material provided was very competent, well organized and in plenty; I never felt that I would run out of practice questions."



Anuj Dharap

GRE: 336/340

"It was a very satisfying experience with Collegepond. You get beyond your money's worth. They covered so many aspects of the entire application process which I had never heard about."



Rishi Mody

GRE: 336/340

"Collegepond has been of a lot of help throughout the entire process. They would be there for me endlessly till I was completely satisfied with my documents and other preparations. I could always seek their help & advice."



Rajan Tidke

GRE: 327/340

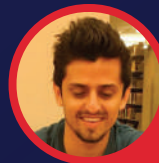
"The services provided by CP concerning GRE coaching were nothing short of exemplary. Qualified instructors, well-structured lectures (especially during the pandemic), and an eagerly personalized student contact helped me pave my way towards a solid 325+ in GRE."



Yazad Bilimoria

TOEFL: 119/120

"Thanks to the coaching offered by Collegepond, I was able to prepare for TOEFL within a week. They provided me with a concise, and relevant material that helped me understand the exam pattern well and were quick in assessing my mock exams by providing me with valuable feedback that helped me perform well."



Shirish Dhar

TOEFL: 120/120

"The overall experience with Collegepond has been very good. The counsellors have always been there to help me out no matter what the time was. Their expertise in crafting brilliant University applications is unparalleled."



Collegepond Counsellors Pvt. Ltd

Mumbai | Thane | Hyderabad

www.collegepond.com | info@collegepond.com

Scan the QR Code for a Free Counselling Session

