



J.P.Morgan



Bloomberg

Morgan Stanley



Deloitte.



WE BUILD CAREERS



amazon



COLLEGEPOND

LEADERS IN CAREER & ADMISSION COUNSELLING

COUNSELLING SCORECARD

Your Future, Our Priority.

As our slogan says, we deem your future education as our top priority. We have helped students all across the globe to achieve admits in the world's crème de la crème of universities.



United States of America

Singapore & Ireland

Canada & Germany

Europe & Australia



Collegepond
Your Future, Our Priority

Dear Student,

We are delighted to introduce the 2019 Scorecard. Building upon previous year's achievements, we continue to raise the bar for ourselves by helping our students gain admissions in leading universities across the globe. Some of the highlights of our last year's accomplishments are as follows:

- 12 students have secured admission in University of California, Berkeley.
- 34 students have secured admission in Columbia University.
- 55 Students have secured admission in Carnegie Mellon University.
- 27% of our students have secured admission in Ivy Leagues cumulatively.
- 72% of our students have secured admission into their dream universities.
- Over 12% of aspirants have received scholarships.
- 40% of our students have received admissions in Top 10 Universities.

This year we have guided our students in securing admission in top universities in over 16 countries, including the USA, Canada, Ireland, Sweden, Netherlands, Germany, Switzerland, Australia and more. The superlative result is a testament to our singular focus in helping our students develop a cohesive application strategy and achieve astounding success in their respective careers.

While getting admission to the right university serves as the first crucial step, being able to leverage the same and secure a full-time position upon graduation is the ultimate goal. Our continuous mentoring and ever-expanding network has enabled our students to acquire full-time positions at leading multinationals. Our Class of 2017 students has secured full-time positions at leading companies such as:

- Google
- Microsoft
- J.P. Morgan
- Tesla Motors
- Intel
- Apple
- Abott
- Salesforce
- Deloitte
- Oracle
- Amazon
- Facebook
- Samsung
- Morgan Stanley
- Adobe

Wish to climb the ladder of success? Look no further. We have the machinery in place to ensure that you reach the summit of success. To find out more about how we can become your trusted advisor in this journey, feel free to schedule a free counselling session with one of the expert counsellors by emailing us at info@collegepond.com or by requesting the same on www.collegepond.com.



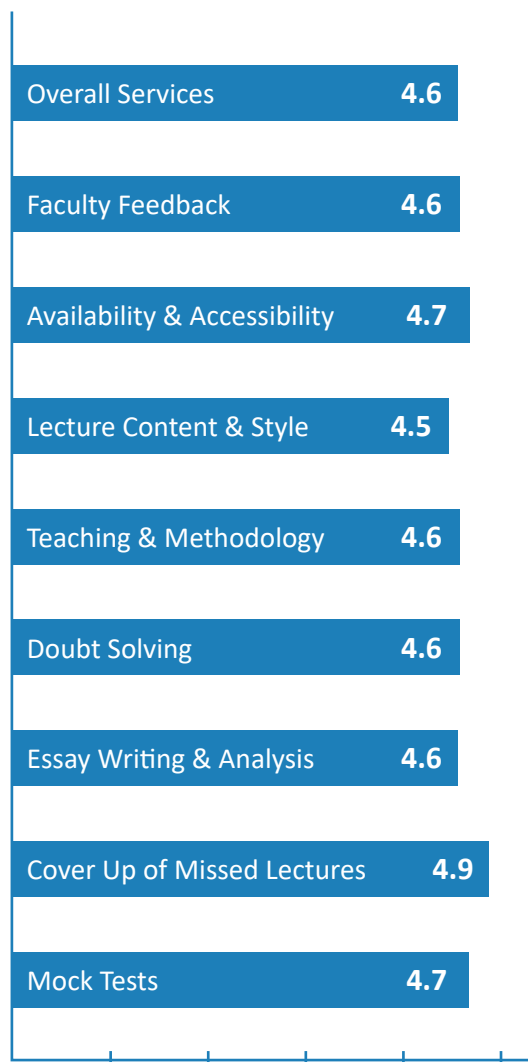
Scan this QR code to join our WhatsApp Groups & Network with seniors & fellow study abroad aspirants.

Our Student Feedback

Counselling Feedback



Test Prep Feedback



Our Online Ratings



Collegepond Google Rating

4.6/5 ★ ★ ★ ★ ★



Collegepond Facebook Rating

4.7/5 ★ ★ ★ ★ ★



Collegepond Just Dial Rating

4.5/5 ★ ★ ★ ★ ★



Contents

Services We Offer	01
Top School Admits	03
Masters Admits	05
Other Admits	16
Scholarships	17
Our Advantage	18

Services We Offer.

Our MS Counselling Services are focused on helping students develop the ideal platform to embark upon a successful career.



> 360° Career Counselling

At Collegepond, we provide holistic guidance to students to enable them to identify their professional inclinations and ascertain the skills they require to transform their career dreams into reality. Packing together a rich wealth of experience, we help students identify their strengths and weaknesses, acquaint them with various suitable career options, and help them identify globally reputed academic programs that best suit their profile and aspirations.

CONVERGE

> Converge

Converge is our proprietary work flow management system which helps you navigate through each aspect of the application process i.e. SOP, LOR, resume, additional essays, career and university selections with ease and confidence. Our high-end technology platform also doubles up as a huge central repository for sample essays, videos, student experiences and other relevant resources.



> Interview Preparation

Apart from application essays, many universities also conduct personal interviews as a crucial criterion for confirmation of a student's merit. At Collegepond, we train students to put their best foot forward by helping them confidently face some of the most grueling university interviews.



> Profile Building

Not every student is an early bloomer, but at Collegepond, we believe that no matter what the past, every student has a great future. To that end, we not only encourage every student to build on their existing profile, to enable them to strengthen their candidature but also actively guide them in this journey.



> Application Assistance

Identifying the right academic programs and universities, and filling out the applications can be an unnerving process for many students. At Collegepond, we have a dedicated team that provides personalized assistance in submitting university applications by helping students in keeping track of various application deadlines and university-specific requirements.



> Financial Planning

Higher education abroad is a huge investment for the future, and in terms of monetary expense, a considerably large one. At Collegepond, we strive to enable every student to fulfill their academic dreams by working closely with the students and their parents to plan out their financial strategy. Also, through our tie-ups with various financial institutions, we help students avail of best-in-class products for education loans, travel and health insurance, and FOREX.



> Schools & Program Selection

The problem of too many choices is totally real! With umpteen outstanding institutes around the world offering a plethora of programs, it is natural for students to feel confused. At Collegepond, we help students in making the optimum choice of programs and universities based on crucial factors that capture the student's long-term career aspirations.



> SOP, LOR, Resume

Application Essays are crucial deciding factors influencing a student's admission prospects. Collegepond helps students make a strong case for their candidature by helping them frame their SOPs, Resumes, LORs, and other University and program-specific essays in the best possible manner. Our content team comprises of professionals with a diverse range of industry experience, and each essay is reviewed and assessed on multiple parameters by different team members before it is finalized, thus ensuring a high strike rate.



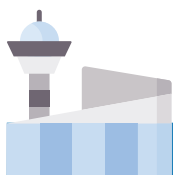
> Scholarship

As the value of quality education continues to rise, several Indian and international institutions lookout for deserving students to help them fulfill their higher education dreams. At Collegepond, we help students with information on such merit-based scholarship opportunities and also help them to apply for scholarships with zero-interest loans.



> VISA Counselling

At Collegepond, we guide students with the VISA process by helping them finish necessary paperwork, assisting them in the VISA application, aiding them in showcasing their financial capabilities, and helping them in facing the VISA interview by conducting multiple mock rounds. We follow a detailed and structured VISA counselling process, which has helped us maintain an outstanding track record of 99% success rate.



> Pre-Departure Orientation

Studying abroad places students in a highly unfamiliar territory - a different country, a rigorous academic setting and a new lifestyle, while compelling them to ensure a high performance academically. Our pre-departure orientation program helps students make a smooth transition into the new environment by briefing them about various options for FOREX, ticketing, accommodation, and various country-specific do's and don'ts to enable them to have an enjoyable study experience abroad.



> Post Landing Services

Every student enrolled at Collegepond becomes part of our ever-growing community as we continue to extend our services even after our students commence with their education abroad. Our post-landing services include visitor VISA counselling for parents, resume drafting services for internships, assistance with essays for Research Assistantship, and help in networking with Collegepond alumni.



University Name	Admits
Stanford University	1
Yale University	2
University of California, Berkeley	12
Columbia University	34
Delft University of Technology	22
Cornell University	15
Georgia Institute of Technology	24
University of Pennsylvania	16
Carnegie Mellon University	55
ETH Zürich, Switzerland	8
Duke University	12
Purdue University	42
National University of Singapore	3
Dartmouth College	4
University of Illinois at Urbana-Champaign	55
University of Michigan, Ann Arbor	24
University of California, Los Angeles	12
University of California, San Diego	15
University of Texas at Austin	12
Kelley School of Business	8
Northwestern University	12
Johns Hopkins University	9
Eindhoven University of Technology	8
London School of Economics	2
RWTH Aachen University, Germany	3
University of Southern California	92
New York University	85
North Carolina State University	95
University of New South Wales	2
KTH Royal Institute of Technology	2
University of British Columbia	6
University of Sydney, Australia	2
Tufts University	4
University of Washington	28
Chalmers University of Technology	5
University of Hong Kong	2
Brown University	4
London School of Business	2

Tanaya Seth

Carnegie Mellon University
Masters in Management
Information Systems



The Collegepond team took care of everything right from career counselling with Suraj Sir till pre-departure tips from Jimeet Sir. I started my application process around December when deadlines for many top universities had already passed. Despite the time crunch and the enormous pressure, the SOP, LOR & Resume teams extended phenomenal support to me. They proofread my SOP and everything worked out very nicely. Not only did they help me get everything ready within my deadlines, but also got me into my dream university, CMU! It's truly amazing how much effort the Collegepond team puts in to suit your interests and aspirations.

Akshay Shah

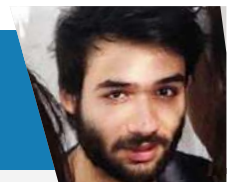
Dartmouth College
Masters in Engineering
Management



The one thing that I really like about Collegepond is the end to end service it provides to students, guiding us through each and every step and the way they do this is through their highly organized Converge Platform that helps us navigate through everything easily. Right from brainstorming courses and colleges suitable for the students, to the final VISA and even the post landing services, Collegepond has been a one-stop solution for everything.

Prateek Malhotra

Hong Kong University
Masters in Environmental
Engineering



I came to Collegepond in November 2018 as a very confused young adult. The only thing clear in my head was to work in the field of Environmental Management. The way the team crafted my story with their expertise in the field, helped me secure admission in 3 universities. (All, which I had applied for) I can proudly say that none of this would've been possible if it weren't for the dedication and determination of the CP team. Thank you!

University Name	Admits
University of Colorado Boulder	24
Texas A&M University	14
University of Toronto, Canada	8
University of Minnesota Twin Cities	16
University of Melbourne, Australia	4
University of Maryland, College Park	62
University of Wisconsin-Madison	8
Virginia Polytechnic Institute and State University	20
University of Massachusetts Amherst	18
University of Cincinnati	18
University of Waterloo, Canada	6
Northeastern University	152
State University of New York - Buffalo	32
University of Pittsburgh	30
Case Western Reserve University	2
Savannah School of Architecture and Design	3
State University of New York - Stony Brook	35
Pratt Institute	5
Indiana University Bloomington	35
University of Florida	38
Clemson University	18
University of California, Irvine	20
University of Illinois at Chicago	65
Pennsylvania State University	14
New York Medical College	2
Boston University	18
Syracuse University	45
Arizona State University	124
University of Texas at Dallas	95
Ohio State University	12
Drexel University	6
University of Georgia	3
Lehigh University	9
University of Western Ontario	2
Singapore Management University	2
Fordham University	4
University College Dublin	4
HEC Paris	6

Steffie Rego

Carnegie Mellon University
Masters in Business Intelligence
& Data Analytics



Kudos to Collegepond for the amazing work they are doing. I was recommended Collegepond by a few friends and I must say, they did live up to my expectations. They assisted me right from the initial stages of application like finalizing my country and Masters course, suggesting a course that is best suited for my profile, building strong SOPs, LORs, resumes right up to holding finance and pre-departure seminars and mock VISA interviews. Every counselor was available to solve any kind of doubts at any point in time. They have my highest recommendation.

Sanjay Vishwakarma

Carnegie Mellon University
Masters in Embedded Systems



Preparing for the admission process of education abroad, especially with me being a working professional was a challenging task for me, but all thanks to Collegepond, for their valuable support at every step, that made this task smooth. They have a Converge web application in which, for every essential step of admission like LOR, SOP, there's a different section and a particular person from CP is assigned to it. This made me to not miss out on any important deadlines pertaining to the universities. I made an admit to Carnegie Mellon University, Silicon Valley. All thanks to Collegepond.

Akshata Jaywant

ESCP Europe
Masters in Finance



Enrolling to Collegepond has been one of the wisest decisions I have made for my postgraduate studies. The Team at Collegepond has been very helpful at every step of the admissions, right from selecting the colleges, to applying to them, to preparing me for studies abroad. I thank the Collegepond team for the help that they have provided, including the further assistance for the VISA.

University Name	GRE	TOEFL/IELTS	GPA
University of California, Berkeley	327	115	3.7
Georgia Institute of Technology	326	115	3.8
Georgia Institute of Technology	321	118	3.6
Georgia Institute of Technology	330	105	3.7
Georgia Institute of Technology	320	103	3.5
Carnegie Mellon University	321	110	3.4
Carnegie Mellon University	326	115	3.8
Carnegie Mellon University	320	106	3.6
Columbia University	326	115	3.8
Columbia University	323	106	3.6
Columbia University	315	105	3.8
Cornell University	320	107	3.5
Cornell University	318	105	3.7
Cornell University	310	104	3.8
Duke University	327	110	3.4
University of Massachusetts Amherst	324	109	3.4
University of Massachusetts Amherst	318	114	3.1
University of Massachusetts Amherst	316	110	3.6
University of Pennsylvania	315	110	3.8
Pennsylvania State University	324	109	3.4
Pennsylvania State University	313	102	3.7
University of California, Los Angeles	325	115	3.7
University of California, Los Angeles	331	119	3.6
University of California, Davis	320	113	3.4
Purdue University	323	117	3.8
Purdue University	318	113	3.5
National University of Singapore	324	109	3.4
University of Southern California	317	111	3.8
University of Southern California	315	110	3.8
University of Southern California	310	101	3.6
University of California, Irvine	314	96	3.7
University of California, Irvine	318	116	3.6
New York University	321	110	3.4
New York University	316	115	3.8
New York University	325	114	3.1
New York University	310	107	3.6
Johns Hopkins University	321	116	3.5
Johns Hopkins University	331	110	3.4
Johns Hopkins University	326	115	3.8
Indiana University Bloomington	314	106	3.6
Indiana University Bloomington	316	91	3.7

Shreesha Kulkarni

Georgia Institute of Technology
Masters in Computer Science



Right from preparing for the GRE, to preparing to fly out of the country, to the onset of the Master's journey, Collegepond has played a pivotal role in this entire process. The Converge platform, extensive study material, and abundant resources, coupled with the extremely friendly, supportive, dedicated, easily accessible and well-informed fleet of expert counselors will surely ensure admission into one's dream university. I would like to thank everyone at Collegepond and will continue to highly recommend it!

Rahul Ramanathan

Carnegie Mellon University
Masters in Computer Science



Collegepond enabled me to get into my dream university by helping me make informed decisions and structure my application perfectly. The entire process from University Selection to VISA is daunting, and Collegepond's continued support from start to end helped make it easier. The Converge portal helped streamline the process and break down each task into modules, which helped me gain clarity about what is to be done and what is the expectation. It is not just the counselors, but the entire Collegepond community, including the current students and the ex-students, helped me with all sort of queries and were easy to reach out through Collegepond channels.

John Britto Nadar

University of Massachusetts Amherst
Masters in Computer Science



I had a lovely experience with Jimeet Sir and the rest of the Collegepond team. You just have to trust them; they will make your application a cut above perfection. The entire team, from LOR counselors to resume counselors, to SOP counselors and of course Jimeet Sir, all have been instrumental and very helpful in this entire procedure. Kudos to the entire Collegepond team!

University Name	GRE	TOEFL/IELTS	GPA
University of California, San Diego	325	114	3.7
Northwestern University	323	109	3.6
Boston University	301	98	3.5
Boston University	310	101	3.6
Boston University	310	107	3.6
North Carolina State University	326	115	3.8
North Carolina State University	320	105	3.7
North Carolina State University	313	103	3.5
North Carolina State University	315	99	3.4
State University of New York - Stony Brook	314	105	3.7
State University of New York - Stony Brook	317	111	3.8
State University of New York - Stony Brook	316	109	3.6
State University of New York - Stony Brook	315	114	3.1
State University of New York - Stony Brook	318	95	3.7
University of Colorado Boulder	325	114	3.1
University of Colorado Boulder	323	107	3.5
University of Colorado Boulder	321	115	3.6
State University of New York - Buffalo	325	105	3.5
State University of New York - Buffalo	322	117	3.8
State University of New York - Buffalo	313	98	3.8
University of Florida	312	103	3.5
University of Florida	315	110	3.8
University of Florida	321	115	3.6
Arizona State University	313	103	3.5
Arizona State University	317	111	3.8
Arizona State University	312	103	3.0
Arizona State University	308	102	3.4
Syracuse University	315	108	3.5
Iowa State University	323	107	3.5
Dublin City University, Ireland	306	102	3.0
Northeastern University	313	103	3.5
Northeastern University	325	114	3.1
Northeastern University	315	108	3.5
Worcester Polytechnic Institute	318	108	3.5
University of California, Santa Cruz	315	110	3.8
Virginia Institute of Technology	327	113	3.5
Virginia Institute of Technology	319	116	3.1
University of Wisconsin-Madison	320	114	3.7
University of Utah	319	113	3.5
University of Texas at Dallas	315	108	3.5
University of Texas at Dallas	309	109	3.5

Saifil Momin

Georgia Institute of Technology
Masters in Computer Science



Collegepond has simplified the entire application process greatly by providing an efficient one-stop solution. Their team of experts effortlessly covers the entire spectrum of the application process, from drafting SOPs, LORs to Education Loans, VISA, and Pre-departure. Additionally, their online portal: Converge is a quality platform for many useful resources. Finally, I'm grateful to Jimeet Sir for being so helpful and highly responsive during the entire process.

Masira Mulla

University of Southern California
Masters in Computer Science



Initially, I was a tad bit apprehensive to join Collegepond because of the relatively higher counselling fees. Fortunately, it turned out to be worth every penny. They guide you even through the seemingly irrelevant processes and answer your doubts however silly they may be. What's amazing is that they do not cross the fine line between guidance and spoon-feeding. The online portal, Converge, was a one-stop solution to all counselling needs, be it booking appointments or SOP refining. Also, the additional services and collaborations namely courier, loan and vaccination are extremely useful. Lastly, a shout out to Jimeet Sir, who patiently kept answering my queries till 2 am during my TOEFL debacle.

Parthvi Shah

New York University
Masters in Computer Science



The different services that Collegepond offers, have been really helpful for me. They just managed to help me get rid of all my worries and apprehensions regarding my application. The way SOPs and LORs were crafted, was brilliant. Counselors are always on their feet to help us with whatever queries we had. Moreover, Collegepond has a well-designed process at every step and it was a great experience to be a beneficiary of their services.

University Name	GRE	TOEFL/IELTS	GPA
University of California, Berkeley	323	7.5	3.6
University of California, Berkeley	325	115	3.9
Carnegie Mellon University	314	104	3.7
Carnegie Mellon University	314	108	3.5
Carnegie Mellon University	310	104	3.7
Kelley School of Business	312	106	3.6
Kelley School of Business	314	108	3.5
Kelley School of Business	316	106	3.5
University of Toronto, Canada	323	114	3.4
New York University	307	103	3.4
New York University	323	114	3.4
University of Illinois at Urbana-Champaign	315	108	3.3
University of Illinois at Urbana-Champaign	309	106	3.7
University of Illinois at Urbana-Champaign	315	102	3.4
Texas A&M University	314	104	3.7
Texas A&M University	314	108	3.5
University of Maryland, College Park	309	106	3.7
University of Maryland, College Park	315	102	3.4
University of Maryland, College Park	311	105	3.2
University of Texas at Austin	319	109	3.6
University of Florida	312	102	3.5
University of Cincinnati	317	111	3.5
University of Cincinnati	316	102	3.7
University of Illinois at Chicago	307	103	3.4
University of Illinois at Chicago	305	103	3.6
University of Pittsburgh	315	102	3.4
University of Pittsburgh	310	107	3.5
University of Washington	309	96	3.6
University of Washington	309	108	3.3
Rutgers University	311	112	3.3
Rutgers University	299	95	2.8
Rutgers University	297	91	3.2
Syracuse University	302	105	3.3
Syracuse University	305	101	3.4
Northeastern University	299	95	2.8
Northeastern University	310	107	3.5
University of Texas at Dallas	299	95	2.8
University of Texas at Dallas	296	101	3.0
State University of New York - Buffalo	311	112	3.3
Arizona State University	305	108	3.3
Queens University School of Business	323	114	3.4

Qutub Khan

University of California, Berkeley
Masters in Management Information Systems



I approached Collegepond at a rush hour, a total race against the clock! Jimeet and the entire team have been very supportive. They guided me pretty well during the entire process and helped widen my overall perspective about my master's degree. The counselors were great, always willing to help, and their assistance and guidance was the key to helping me bag an admit into my dream university. I truly appreciate all the help and support I received from Collegepond.

Yashil Kalyani

Kelley School of Business
Masters in Management Information Systems



I thank "Team Collegepond" for their invaluable contribution to my application process for overseas education. Be it my SOP, showcasing my strengths, resume displaying my core expertise, or sourcing LOR from the right references, Collegepond's team of experts made sure they delivered on time with acute precision. The best part is their team kept me in the loop all along, creating a sense of inclusion and transparency while modifying the various drafts worked upon to arrive at the final versions. No matter how tough the hurdle, Collegepond's assistance helped me curate the best version for my applications, enhancing my profile and securing my admission to the shortlisted universities. My heartfelt gratitude to their team, assisting and guiding me at every step to turn my aspirations into reality.

Akshaya Iyer

University of Maryland, College Park
Masters in Management Information Systems



Collegepond has been the light through the unknown path of getting an admit. Jimeet Sir has been very supportive and understanding right from the start. The counselors at every stage guided me to ensure I have the best materials and acted promptly to my issues. I cannot thank Collegepond enough for the help and assistance they provided through the entire application process.

University Name	GRE	TOEFL/IELTS	GPA
Columbia University	313	104	3.5
Columbia University	326	106	3.9
University of Pennsylvania	332	112	3.9
University of Pennsylvania	314	108	3.8
University of Pennsylvania	324	118	3.8
University of Pennsylvania	320	119	3.7
Georgia Institute of Technology	332	112	3.9
Georgia Institute of Technology	326	114	3.9
University of California, Los Angeles	332	112	3.9
University of Colorado Boulder	312	102	3.9
University of Colorado Boulder	319	109	3.4
University of Colorado Boulder	306	93	3.5
University of Colorado Boulder	332	112	3.9
Delft University of Technology	310	7.0	3.6
Delft University of Technology	314	108	3.8
Carnegie Mellon University	305	98	3.7
Carnegie Mellon University	332	112	3.9
Carnegie Mellon University	314	108	3.8
Carnegie Mellon University	324	118	3.8
University of California, San Diego	326	114	3.9
University of California, San Diego	327	115	3.9
University of British Columbia	332	112	3.9
University of British Columbia	326	106	3.9
RWTH Aachen University, Germany	310	7.0	3.6
University of Waterloo, Canada	326	106	3.9
ETH Zürich, Switzerland	326	114	3.9
ETH Zürich, Switzerland	312	104	3.9
ETH Zürich, Switzerland	326	110	4.0
University of Texas at Austin	332	112	3.9
University of Michigan, Ann Arbor	313	102	3.8
University of Michigan, Ann Arbor	332	112	3.9
University of Michigan, Ann Arbor	326	114	3.9
University of Michigan, Ann Arbor	316	103	3.9
Hamburg University of Technology	310	7.0	3.6
University of Twente, Netherlands	310	7.0	3.6
University of Minnesota Twin Cities	312	102	3.9
North Carolina State University	312	102	3.9
North Carolina State University	306	93	3.5
North Carolina State University	305	98	3.6
State University of New York - Buffalo	296	89	3.4
New York University	305	98	3.6

Shilpa Suresh

RWTH Aachen University,
Germany
Masters in Electrical
& Computer Engineering



My experience with CP has been extremely amazing. As a student from Chennai, using the entire service online, through the well-structured CP Converge platform was honestly beyond my expectations. Right from selecting a suitable course, to offering guidance on which university to select among multiple admits, to dedicated counselors assigned for each section offering extremely personalized guidance at each step of the process, was something that really stood out for me. Jimeet Sir used to always be available, just a call away, to offer expert and practical advice to any kind of confusion that I encountered during the entire application process. My journey with Collegepond was an incredibly fulfilling learning experience.

Rohan Surve

University of California,
Los Angeles
Masters in Electrical
& Computer Engineering



The counselors at Collegepond helped me in selecting the programs best suited to my academic and professional goals. Their assistance in drafting my statement of purpose really helped me put forth my application in the best manner possible. Since my college wasn't in Mumbai, I feared that the counselling services would not be as effective. However, the webinars on Converge succeeded in guiding me perfectly at every stage of the application process. All my counselors were easily accessible on the phone and were extremely helpful. I am happy with my decision to choose Collegepond.

Deepen Solanki

University of Michigan,
Ann Arbor
Masters in Embedded Systems



I came to Collegepond with a scattered, unorganized collection of my work, experiences, and achievements. Jimeet Sir and his team helped me compile these things in an effective manner which helped me secure admits in top colleges. The entire MS application process was greatly simplified. Thank you, CP!

University Name	GRE	TOEFL/IELTS	GPA
Columbia University	324	115	3.4
Carnegie Mellon University	318	110	3.6
Duke University	321	119	3.7
Georgia Institute of Technology	324	110	3.6
University of Michigan, Ann Arbor	311	110	3.7
ETH Zürich, Switzerland	326	108	3.7
Boston University	311	110	3.7
University of British Columbia	326	102	3.7
John Hopkins University	311	114	3.7
Northwestern University	311	114	3.7
Pennsylvania State University	326	109	3.6
Purdue University	311	114	3.7
Tufts University	310	105	3.5
New York University	321	114	3.5
Rutgers University	311	114	3.7
University of California, Irvine	310	105	3.5
University of Illinois at Urbana-Champaign	301	98	3.4
North Carolina State University	311	114	3.7
University of Ottawa	NA	7.5	3.6
University of Texas at Dallas	297	98	3.5
Northeastern University	310	105	3.5
Wageningen University	321	102	4.0
University of Helsinki	320	102	4.0
University of Copenhagen	318	102	4.0

Sakshi Chavan

Johns Hopkins University
Masters in Biotechnology



I thank “Team Collegepond” for helping me with the complex admission procedure for my master’s program. Their support right from the GRE preparation to the final Visa Interview for enrollment is highly commendable. Their encouragement and assistance simplified an otherwise complicated and overwhelming procedure and turned my efforts into success. I am grateful for the guidance and support from the skilled experts of Collegepond who made sure that my admission procedure went through smoothly without any roadblocks.

Vaidehi Patil

University of Wisconsin-Madison
Masters in Biotechnology



I would, and I have highly recommended Collegepond to a lot of students aspiring to study in the USA because of the amazing support system I’ve found through CP. Jimeet Sir especially, despite being incredibly busy, has always been available at any time to answer my questions! Collegepond really went above and beyond in helping me and other students to achieve our dreams.

Finance | Financial Engineering

University Name	GRE	TOEFL/IELTS	GPA
Columbia University	319	116	3.7
Columbia University	324	113	3.6
Georgia Institute of Technology	319	116	3.7
Georgia Institute of Technology	321	109	3.3
University of Toronto, Canada	NA	7.5	3.2
Carnegie Mellon University	328	113	3.6
University of California, Los Angeles	319	116	3.7
University of California, Los Angeles	324	106	3.6
Fordham University	315	110	3.6
Fordham University	321	109	3.7
University of Southern California	324	113	3.6
University of Chicago	315	91	3.4
University of Illinois at Urbana-Champaign	326	110	3.7

Rushabh Vinchhi

Columbia University
Masters in Financial Engineering



I came to Collegepond uncertain about the direction I wanted to take in terms of my career. Scared and anxious, I had little understanding of where my interests lay and was also unsure about how I could translate my passion for finance into a fruitful and prosperous career in the same domain. This is where Collegepond’s guidance – backed by services including college selection, SOP, LOR and Resume drafting, among others – helped me immensely. With their help, I have been able to construct a road-map leading to my goals and secure an admit into my dream university.

University Name	GRE	TOEFL/IELTS	GPA
University of Pennsylvania	310	8.0	3.2
University of California, Los Angeles	312	8.0	3.4
University of Texas at Austin	303	99	3.5
Pratt Institute	298	97	3.6
Pratt Institute	310	8.0	3.2
Carnegie Mellon University	308	109	3.5
Columbia University	308	105	3.4
Delft University of Technology	NA	7.5	3.7
KTH Royal Institute of Technology	NA	106	3.6
Parsons School of Design	NA	106	3.6
Savannah College of Art and Design	NA	7.0	3.4

Kinjal Mor

Pratt Institute
Masters in Real Estate
Development & Sustainability



Going abroad requires a lot of work, planning and time. However, due to Collegepond, the process has been a breeze for me. They were there from the very beginning, helping me from University Selection to VISA procedures. I would also like to thank Jimeet and the team for always being at my disposal whenever I had any queries or doubts. I would recommend everyone who's going abroad to choose Collegepond because it's simply the best.

MEM | MIM | Tech Management | Project Management

University Name	GRE	TOEFL/IELTS	GPA
Dartmouth College	332	116	3.5
Dartmouth College	323	113	3.7
Duke University	322	117	3.5
Duke University	318	100	3.7
Duke University	328	119	3.7
Columbia University	318	107	3.8
Columbia University	316	100	3.7
Columbia University	313	109	3.3
Brown University	323	113	3.7
Yale University	322	117	3.5
Cornell University	320	110	3.5
Cornell University	323	113	3.7
Carnegie Mellon University	321	110	3.6
London School of Business	323	113	3.7
University of Michigan, Ann Arbor	322	117	3.5
London School of Economics	323	113	3.7
University of Southern California	322	117	3.5
University of Southern California	318	100	3.7
Purdue University	323	113	3.7
Purdue University	321	106	3.5
University of Colorado Boulder	304	95	3.6
University of Colorado Boulder	302	92	3.2
University of Connecticut	313	109	3.3
Northeastern University	304	95	3.6
University of Toronto, Canada	323	114	3.6

Talha Kapadia

Dartmouth College
Masters in Engineering
Management



Collegepond has helped me with everything from Letters of Recommendation, Statement of Purpose to my CV and the VISA process. Their online portal Converge is a one-stop solution for a student's counselling needs. It helped me stay in touch with my counselors very easily and saved me a lot of time. Their services will only get better in the future and I am happy to call myself a Collegepond student.

Sumeet Shetty

University of Illinois
at Urbana-Champaign
Masters in Engineering
Management



I had an excellent experience with Collegepond, which was particularly made possible through Converge, a very well-made online portal that helped me acquire information that I needed on time and helped me gain direct access to the counselors. Overall, this saves a lot of time. I had asked all my queries related to SOP, LOR and applications on Converge and they were addressed immediately. I would like to thank the entire CP team for all their efforts!

University Name	GRE	TOEFL/IELTS	GPA
University of Texas at Austin	332	112	3.4
University of Texas at Austin	324	114	3.6
University of Texas at Austin	325	118	3.3
Purdue University	318	101	3.9
Purdue University	324	114	3.6
Purdue University	322	105	3.5
Purdue University	314	98	3.4
Purdue University	318	101	3.4
Arizona State University	307	106	3.5
University of Texas at Dallas	310	105	3.4
University of California, San Diego	325	110	3.4
Duke University	318	101	3.9
Duke University	332	112	3.4
Duke University	319	101	3.3
University of Minnesota Twin Cities	315	103	3.4
University of Minnesota Twin Cities	324	114	3.6
University of Minnesota Twin Cities	321	108	3.5
University of Maryland, College Park	310	118	3.3
Rutgers University	313	98	3.4
University of Minnesota Twin Cities	323	7.5	3.6
HEC Paris	332	112	3.4
Georgia State University	310	105	3.4

Mehul Zawar

Purdue University
Masters in Business Analytics



Being a working professional, I used to get less time for researching universities, working on LORs and SOPs. Collegepond guided me in each phase of this process from SOPs, LORs to VISA mock interviews and pre-departure processes. I can vouch for Collegepond, that students will get the best from them in terms of service throughout the application process!

Krusha Bhatia

University of Illinois
at Urbana-Champaign
Masters in Business Analytics



The entire application process is very daunting, but the Collegepond team helped me immensely along the way. Their portal which streamlines the entire process, makes you feel less lost!! The entire team right from Jimeet Sir, Suraj Sir and all the counselors, be it for SOP, LOR, Transcripts, or filling Application form are always available to help. They have tie-ups with various service providers for FOREX, Immunization, Loans, etc. which eases your post admit process too. Kudos to the team for doing a great job!

Pharmacy (Drug Regulatory Affairs | Pharma Admin | Pharmaceuticals | Pharmacology)

University Name	GRE	TOEFL/IELTS	GPA
Texas A&M University	305	102	3.6
University of Southern California	320	116	3.6
University of Southern California	312	111	3.8
University of Minnesota Twin Cities	312	111	3.8
University of Minnesota Twin Cities	322	115	3.8
North Carolina State University	305	102	3.6
MCPHS University	324	108	3.6
University of Maryland, College Park	295	6.5	3.5
Fairleigh Dickinson University	290	93	3.3
Northeastern University	305	91	3.5
Northeastern University	310	108	3.6
Stevens Institute of Technology	315	108	3.6
University of Pittsburgh	315	109	3.9
Rutgers University	307	95	3.5
San Diego State University	305	102	3.6

Ishaan Duggal

University of Minnesota
Twin Cities
Masters in Pharmaceutics



My heartfelt gratitude to Collegepond for their relentless support and assistance throughout the admission process. Their team of expert professionals guided me in every step, including university selections, drafting SOPs and Resumes, to enhancing my profile, and sourcing the right reference for the LOR. Their approachability and easy accessibility have contributed to the smooth fulfillment of my admission goals. I recommend Collegepond to every aspirant pursuing overseas education for the best professional guidance in their field.

University Name	GRE	TOEFL/IELTS	GPA
Columbia University	325	114	3.8
Oregon State University	323	111	3.8
University of Maryland, College Park	322	110	3.7
University of Michigan, Ann Arbor	324	108	3.7
Worcester Polytechnic Institute	315	109	3.7
Worcester Polytechnic Institute	318	107	3.9
Arizona State University	315	109	3.7

Atharva Tatkare
Columbia University
Masters in Robotics



I am extremely happy with the university applications and VISA mock rounds. The Collegepond team cleared my doubts regarding the entire application process & finances quickly and efficiently. Kudos to the entire team at Collegepond!

Civil Engineering | Construction Management

University Name	GRE	TOEFL/IELTS	GPA
Columbia University	315	100	3.6
Columbia University	322	97	3.6
Georgia Institute of Technology	320	104	3.9
Georgia Institute of Technology	315	100	3.6
Georgia Institute of Technology	322	97	3.6
University of California, San Diego	310	108	3.6
University of California, San Diego	322	104	3.9
University of California, Los Angeles	322	104	3.9
Carnegie Mellon University	310	111	3.5
Delft University of Technology	323	115	3.7
Delft University of Technology	330	116	3.8
Purdue University	315	100	3.6
Purdue University	322	110	3.8
Purdue University	328	113	3.6
Texas A&M University	322	104	3.9
University of Texas Dallas	309	97	3.6
University of Southern California	318	109	3.5
University of Southern California	312	98	3.6
University of Illinois at Urbana-Champaign	322	104	3.9
Delft University of Technology	310	111	3.5
University of Toronto, Canada	322	104	3.9
University of Sydney, Australia	NA	111	3.5
New York University	310	111	3.5
Eindhoven University of Technology	323	116	3.7
North Carolina State University	310	111	3.5
North Carolina State University	312	90	3.5
Arizona State University	310	90	3.5
Arizona State University	315	100	3.8
University of New South Wales	318	108	3.2
Clemson University	312	102	3.6

Shubham Holani
Georgia Institute of Technology
Masters in Civil Engineering



The overall services of Collegepond are so good, that all you have to do is just give them the inputs and they guide you to the next step and you just go on with the flow, and the next thing you know is it's done. The atmosphere is positive and interacting with Jimeet Sir is very reassuring and motivating. The LOR counselors are perfect at their job. Even the SOP counselor was amazing and the first SOP draft he created was the final one. Special thanks to the entire team for guiding me through every step and solving every problem. Jimeet Sir is a man of honor and deserves every praise in this world. All the counselors were always there for any type of help. Thank you!

Nayan Lad
Cornell University
Masters in Construction
Engineering and Management



Collegepond is an honest product in the market for students looking to pursue a master's degree abroad. Boasting of a highly engaging staff, not only was I guided through every aspect of the application process but also how to prepare better for the challenges awaiting me. CP Converge is the icing on the cake with detailed step by step modules from university selection to Visa interview, having numerous examples and webinars at the student's disposal. Thank you to the entire Collegepond team for helping me achieve my goal.

University Name	GRE	TOEFL/IELTS	GPA
University of California, Berkeley	324	112	3.6
University of California, Berkeley	327	111	3.6
University of California, Berkeley	311	114	3.7
ETH Zürich, Switzerland	340	118	4.0
ETH Zürich, Switzerland	321	109	3.6
Delft University of Technology	324	112	3.6
Delft University of Technology	310	105	3.6
Delft University of Technology	321	100	3.5
Johns Hopkins University	323	105	3.4
Carnegie Mellon University	310	105	3.6
Carnegie Mellon University	321	100	3.5
Cornell University	326	116	3.9
Cornell University	322	112	3.6
University of British Columbia	313	103	3.4
University of Waterloo, Canada	NA	7.0	3.6
University of Waterloo, Canada	313	103	3.4
University of Toronto, Canada	NA	7.0	3.6
University of Pennsylvania	319	102	3.6
Purdue University	310	105	3.6
Purdue University	313	103	3.4
Purdue University	315	100	3.5
University of Southern California	310	105	3.6
University of Southern California	298	98	3.6
University of Massachusetts Amherst	324	113	3.7
University of Massachusetts Amherst	312	113	2.5
University of Massachusetts Amherst	321	100	3.5
National University Of Singapore	NA	117	3.8
University of Maryland, College Park	310	105	3.6
Eindhoven University Of Technology	313	103	3.4
Lehigh University	298	98	3.6
Michigan State University	324	113	3.7
Northeastern University	288	100	3.3
University of Ottawa	NA	7.0	3.6
University of Calgary	NA	7.5	3.5
University of Florida	310	105	3.6
Arizona State University	298	98	3.6
New York University	298	98	3.6
State University of New York - Buffalo	298	98	3.6
University of Houston	288	100	3.3
University of Illinois at Chicago	298	98	3.6

Rucha Railkar

Carnegie Mellon University
Masters in Chemical Engineering



A few among the many praises for the services that CP provided, would be, an organized approach through Converge, helpful and efficient staff, accounting for all my customization requests, excellent end to end help, well I can only go on! As for me, personally, I believe that Collegepond has been instrumental in covering up small dents in my profile, highlighting my strengths and helped me make a very strong application. I write this, only due to the bright results of 7 admits out of 10 applications. I sincerely thank Collegepond who helped me get into my dream school, Carnegie Mellon University.

Vatshal Bhanushali

University of California, Berkeley
Masters in Chemical Engineering



Throughout my entire journey from Mumbai to Berkeley, Collegepond has been super supportive and helpful. The entire process - from deciding colleges to actually flying to the US is cumbersome, to put it mildly. But CP was always there to help me out whenever I needed help - be it an unexpected university interview or sorting my finances for VISA. Kudos to Jimeet Sir and the entire CP team for making the whole process so smooth and seamless.

Jainam Sheth

Lehigh University
Masters in Chemical Engineering



My experience with Collegepond was truly awesome. CP Converge is an amazing interactive place. A few of my favourite modules were LOR, SOP and Application modules. The LOR and SOP questionnaire helped me brainstorm which ideas to include and how to present myself in a better way on paper. On the Application module page, we could see everyone's questions and doubts about filling of university forms, and this helped us clear our doubts much faster. Overall, I was very happy with the services provided by Collegepond.

University Name	GRE	TOEFL/IELTS	GPA
University of California, Berkeley	336	111	3.8
University of California, Berkeley	327	114	3.8
Columbia University	321	118	3.8
Columbia University	323	105	3.6
Texas A&M University	316	104	3.5
Texas A&M University	318	102	3.6
Texas A&M University	322	105	3.9
Pennsylvania State University	313	103	3.9
Purdue University	324	105	3.7
Purdue University	316	110	3.5
Purdue University	318	111	3.6
University of Waterloo, Canada	336	111	3.8
University of Illinois at Urbana-Champaign	318	111	3.6
University of Massachusetts Amherst	323	105	3.6
University of Massachusetts Amherst	312	91	3.5
University of Michigan, Ann Arbor	321	118	3.8
University of Michigan, Ann Arbor	320	107	3.5
University of Washington	315	104	3.4
University of Pittsburgh	324	105	3.7
Lehigh University	313	103	3.9
University of Southern California	313	103	3.9
University of Illinois at Chicago	309	96	3.3
New York University	313	111	3.1
Virginia Institute of Technology	313	103	3.9
Virginia Institute of Technology	318	111	3.8
North Carolina State University	324	105	3.7
North Carolina State University	315	114	3.6
North Carolina State University	317	110	3.5
Rutgers University	309	96	3.3
Arizona State University	312	91	3.5
Arizona State University	315	114	3.6
Arizona State University	309	96	3.3
Northeastern University	310	105	3.6
Northeastern University	317	110	3.5
Northeastern University	309	96	3.3
University of Texas at Dallas	312	91	3.5
University of Texas at Dallas	300	89	3.5
State University of New York - Buffalo	309	96	3.3
Northeastern University	300	89	3.5
Northeastern University	293	315	2.7
University Of Wollongong, Australia	293	315	2.7

Moraldeepsingh Sachdeo
University of California,
Berkeley
Masters in Industrial Engineering



My overall experience with the Collegepond team has been great. The counselors, especially Jimeet Sir and Suraj Sir genuinely helped me and were prompt in clearing my doubts, right from iterating resumes and other documents multiple times, to VISA services, the process has been hassle-free. Most importantly, a wide range of resources were available on Converge that were just a click away. Thank you Collegepond for making my dream come true!

Oshita Sapte
University of Michigan,
Ann Arbor
Masters in Industrial Engineering



Collegepond's entire team was extremely efficient and nailed their jobs. The USP was the fact that for every document, be it SOP or LOR, I was asked to fill an elaborate questionnaire following which the team would go on to create the refined documents. The attention to detail, for example - having three different people to create three different LORs so there would be different writing styles, was immaculate. For the VISA form filling stages, the webinars were extremely helpful. Kudos to the Entire Collegepond Team!

Sanchit Gupta
North Carolina State
University
Masters in Industrial Engineering



Overall, the Collegepond Counselling service was great for me personally. The way everything was systematically presented on Converge, there was nothing that didn't make sense or confuse me regarding the way I should proceed. The LOR, SOP and Resume counselors were constantly in touch as they proceeded with our work and clarified any doubts if they had, simultaneously, so that our work was done ASAP. Suraj, Jimeet and Kaushal Sir were particularly helpful and were literally one call away in case of any problems.

University Name	GRE	TOEFL/IELTS	GPA
Stanford University	322	116	3.6
Columbia University	315	103	3.9
Columbia University	318	106	3.9
Columbia University	316	100	3.5
University of California, Berkeley	321	108	3.8
University of California, Los Angeles	315	103	3.9
University of California, Los Angeles	321	108	3.8
University of California, San Diego	315	103	3.9
University of California, San Diego	319	106	3.8
Carnegie Mellon University	319	106	3.8
Delft University of Technology	315	103	3.9
Delft University of Technology	311	107	3.6
Delft University of Technology	318	106	3.9
Delft University of Technology	321	107	3.5
Texas A&M University	315	103	3.9
University of California, Davis	317	107	3.6
University of Colorado Boulder	315	106	3.6
University of Colorado Boulder	312	99	3.7
University of Colorado Boulder	316	101	3.5
Chalmers Institute of Technology	311	107	3.6
Chalmers Institute of Technology	NA	7.0	3.8
Eindhoven University of Technology	311	107	3.6
Purdue University	315	103	3.9
Purdue University	312	102	3.7
Purdue University	319	106	3.5
Purdue University	317	107	3.6
Purdue University	321	108	3.8
University of Maryland, College Park	315	113	3.5
University of Maryland, College Park	316	101	3.6
Clemson University	319	106	3.8
Clemson University	311	102	3.5
University of Minnesota Twin Cities	317	107	3.6
North Carolina State University	321	108	3.8
North Carolina State University	319	106	3.8
Northwestern University	315	103	3.9
University of Washington	317	107	3.6
University of Illinois at Urbana-Champaign	321	108	3.8
University of Western Ontario	NA	7.0	3.4
Ohio State University	317	107	3.6
Worcester Polytechnic Institute	303	95	3.5
University of Wisconsin-Madison	318	110	3.5

Harshit Kumar

Columbia University
Masters in Mechanical
Engineering



Collegepond offers a great service when it comes to building a profile for studies abroad. The faculty knows exactly what is needed to secure admits from the topmost colleges in the world. The faculty also provides an adequate number of people that are excellent in their field of work so that the final papers needed by the universities are perfect and are finished well before the deadlines. I would recommend Collegepond to everyone who aspires to pursue their studies abroad, as they will not find a more qualified set of people anywhere else.

Paawan Garg

University of California,
Los Angeles
Masters in Mechanical
Engineering



Collegepond's tag line is Your Future, Our Priority. All the counselors at Collegepond follow this thoroughly. The head counselors whom you work with are the best in the market. They are true and empathetic and every counselor knows how to handle, guide and channel the students in the right direction. They will always deliver quality drafts, which otherwise would have been a conundrum for the students. I'd definitely recommend Collegepond to my juniors and my friends in the future. Thank you for all your help, Collegepond!

Jobin Jose

Virginia Polytechnic
Institute & State University
Masters in Mechanical
Engineering



The experience with Collegepond has helped me immensely throughout the application process. Their expert guidance helped me in drafting SOPs, LORs, and resume. The organized online portal provided quick access to counselors and other resources. It has been the most comprehensive counselling service. Thank you team Collegepond!

University Name	Course Name	GRE	TOEFL/IELTS	GPA
Embry-Riddle Aeronautical University	Aerospace Engineering	315	107	3.5
Delft University of Technology	Design	318	106	3.4
University of Zürich	Economics	323	108	3.8
Wageningen University	Food Science and Technology	290	7.5	3.3
University of Manitoba	Food Science and Technology	289	89	3.4
University of Illinois at Urbana-Champaign	Food Science and Technology	304	99	3.4
McGill University	Food Science and Technology	289	90	3.4
Rutgers University	Food Science and Technology	304	99	3.4
Illinois Institute of Technology	Food Science and Technology	290	7.5	3.3
Auburn University	Food Science and Technology	295	7.5	3.2
University of Massachusetts Amherst	Food Science and Technology	304	99	3.4
Centennial College of Applied Arts and Technology	Food Science and Technology	290	7.5	3.3
Ohio State University	Food Science and Technology	305	7.0	3.5
University of North Carolina Charlotte	Health Informatics	315	7.5	3.1
University of San Francisco	Health Informatics	310	7.5	3.2
Purdue University	Health Informatics	315	7.5	3.1
University of Minnesota Twin Cities	Health Informatics	310	7.5	3.2
University of Texas at Austin	International Affairs and Relations	317	97	3.1
University of Washington	International Affairs and Relations	315	98	3.0
North Carolina State University	Marine, Earth and Atmospheric Sciences	310	105	3.8
New York University	Masters in Marketing	325	115	3.6
Northwestern University	Masters in Marketing	326	117	3.7
Carnegie Mellon University	Masters in Marketing	325	115	3.6
Harvard Business School	Masters in Marketing	326	117	3.7
Bentley University	Masters in Marketing	305	105	3.4
University of Illinois at Urbana-Champaign	Masters in Marketing	307	102	3.5
North Carolina State University	Masters in Marketing	304	101	3.4
Texas A&M University	Masters in Marketing	307	102	3.5
Arizona State University	Material Science and Engineering	306	97	3.2
Rutgers University	Material Science and Engineering	304	100	3.2
University of Iowa	Psychology	301	100	3.6
New York Medical College	Public Health and Management	292	85	3.5
University of Illinois at Chicago	Public Health and Management	290	85	3.7
University of San Francisco	Sports Management	300	103	3.4
George Washington University	Sports Management	300	103	3.4
New York University	Sports Management	302	99	3.6
University of Melbourne, Australia	Human Resources Management	303	105	3.5

Student Name	University Name	Scholarship Amount/%
Karan Shah	Virginia Institute of Technology	100% Tuition waiver
Khoshrav Doctor	University of Massachusetts Amherst	100% Tuition waiver
Soham Yande	University of Houston	100% Tuition waiver
Arjun Shah	ETH Zürich, Switzerland	100% Tuition waiver
Vignesh Venugopal	Stanford University	100% Tuition waiver
Prathmesh Matodkar	University of Miami	100% Tuition waiver
Anmol Gandhi	University of Texas at Dallas	50% Tuition waiver + \$1000
Archit Pikle	Rochester Institute of Technology	40% Tuition waiver
Anmol Gandhi	Syracuse University	30% Tuition waiver
Jinal Shah	Rochester Institute of Technology	20% Tuition waiver
Prathmesh Pawar	Case Western Reserve University	20% Tuition waiver
Tanay Dusane	Rochester Institute of Technology	20% Tuition waiver
Prathmesh Matodkar	University of Rochester	20% Tuition waiver
Sukrut Prabhu	University of Washington	Teaching Assistantship
Ameya Shanbhag	New York University	\$7000 per annum
Faizaan Charama	New York University	\$7000 per annum
Karan Manghi	Rochester Institute of Technology	\$6500 per annum
Chetan Laturkar	New York University	\$6000 per annum
Sukrut Prabhu	University of Florida	\$4500 per annum
Hamza Mirza	New York University	\$4000 per annum
Anmol Gandhi	New York University	\$4000 per annum
Parth Ved	New York University	\$3000 per annum
Shweta Pardeshi	University of Houston	\$1000 per annum
Saumit Shrivastava	New York University	\$4000 per semester
Faizaan Charama	University of Florida	\$1500 per semester
Karan Mamar	University of Florida	\$1200 per semester
Ajay Sharma	University of Colorado Boulder	\$34,119
Sukrut Prabhu	University of Cincinnati	\$20,000
Pranali Loke	University of Illinois at Chicago	\$17,390
Dishant Kaushik	Rochester Institute of Technology	\$17,000
Ankita Agarwal	Stevens University	\$15,000
Jainam Shah	Stevens University	\$15,000
Rohan Gala	Rochester Institute of Technology	\$13,068
Kaushang Mehta	University of Cincinnati	\$10,932
Dhruv Dev	Duke University	\$9,750
Ankita Nagar	Syracuse University	\$7,792
Yash Ambegaokar	Purdue University	\$7,000
Aruna Jyothin	University of Cincinnati	\$6,000
Yash Panchamia	New York University	\$6,000
Adarsh Saboo	Arizona State University	\$5,000
Rushabh Shethia	University of Florida	\$4,500
Harshal Patil	University of Florida	\$4,500
Seo Gregory	New York University	\$4,000
Srishti Shriyan	Rutgers University	\$3,500
Karan Lala	University of San Francisco	\$2,500
Paritosh Morparia	Indiana University Bloomington	\$1,000



The Collegepond Edvantage



UNIVERSITY APPLICATION FEE WAIVERS

Applying for overseas education is an expensive affair. Collegepond conducts various on-spot assessment sessions throughout the year where the students can personally meet & get their profile evaluated by university officials. Students attending the session also get an application fee waiver to those schools.



EDUCATION LOAN

We understand that the loan amount and repayment of the same is a significant burden on the family. In a bid to minimize the impact on all fronts, from reduced Processing Fee (PF) to lower interest rates and insurance amounts, we have negotiated attractive wholesale deals with all the leading lenders at rates and PF charges that much lower than the industry average.



FOREIGN EXCHANGE

We have negotiated rates with leading vendors for remittances, travel card, and currency. Our goal is to be transparent; hence, when we do a transaction for a customer, we receive quotes from all our vendors to ensure that you receive the best exchange rate. Once the rate is determined, we work with you and the vendor to ensure that the transaction is conducted in an expedited manner.



FLIGHT TICKET

As students are relocating to a foreign destination, luggage becomes a prime commodity. From time to time, Collegepond has negotiated student offers with various airlines to offer additional baggage allowance, free date change, and competitive one-way fares.



VACCINATION

Students are required to complete the immunization forms before enrolling for classes at the university. Every so often, Collegepond offers vaccination camps, wherein students can take vaccinations for MMR, Hepatitis B, Meningitis, etc. at more than 50% savings to MRP.



TRAVEL & HEALTH INSURANCE

Student health insurance offered by US universities is very expensive. Collegepond works with its students to identify suitable alternate options that offer similar coverage as that offered by the university.

HONDA
The Power of Dreams

CISCO



TESLA



QUALCOMM

ORACLE



AMERICAN EXPRESS



BARCLAYS

Thornton Tomasetti



amazon web services

SAMSUNG



KPMG

YAHOO!



SIEMENS

citigroup



EY
Building a better working world

Goldman Sachs



Collegepond Counsellors Pvt. Ltd

204, 2nd Floor, ML Spaces, D. J. Road,
Opp. Old Jain Mandir, Vile Parle West
Mumbai, Maharashtra 400056

(022) 2610 3135 / (022) 2619 5832

www.collegepond.com Info@collegepond.com



Collegepond

Your Future, Our Priority